

Sustainable Forests Education Cooperative

[Home](#) |
 [Upcoming Events](#) |
 [Past Events](#) |
 [Camp 8 Podcast](#) |
 [About SFEC](#) |
 [Continuing Education Credits](#) |
 [Cloquet Forestry Center](#)

2015 Workshop: Introduction and Application of the Forest Management Guidelines Quick Reference Guide

Contact Us

Eli Sagor, SFEC Program Manager

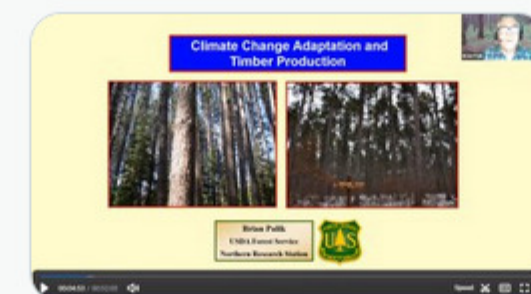
esagor@umn.edu | 218-409-6115

Tweets from @MNForestEd [Follow](#)



UMN SF... @MNFore... · Sep 21
Brian Palik gave a great talk yesterday called Adaptive Silviculture for Climate Change: Lessons for timber-oriented managers.

If you missed it, here's the recording:
sfec.cfans.umn.edu/2022-webinar-s...



1



UMN SF... @MNFore... · Sep 20
Starting in 15 minutes: Adaptive Silviculture for Climate Change



This **half-day workshop**, offered jointly by SFEC and the [Minnesota Logger Education Program](#), will bring natural resource managers and loggers together for an introduction to the new pocket guide to Minnesota's Forest Management Guidelines. Classroom and field activities will focus on using the guide to inform real-world applications of the FMGs. The workshop will be offered twice in 2015:

Date: Wednesday, August 26, 2015 from 8am – noon

Location: Cloquet Forestry Center, 175 University Rd, Cloquet MN 55720

CE Credits: 3.0 Cat 1-CF SAF

Fees: \$40 for SFEC members, \$75 others

Date: Tuesday, September 15, 2015 from 8am – noon

Location: [Sanford Center](#) in Bemidji, MN

CE Credits: 2.5 Cat 1-CF SAF

Fees: \$40 for SFEC members, \$75 others

[Register here](#)

MLEP members may register at no cost at MLEP.org or by calling 218-722-5442.